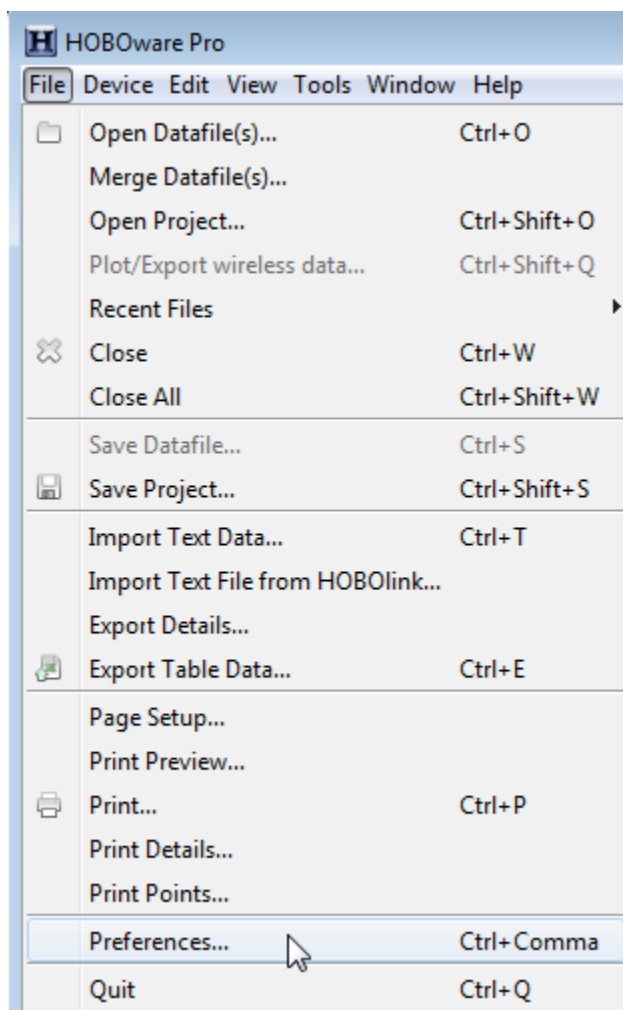


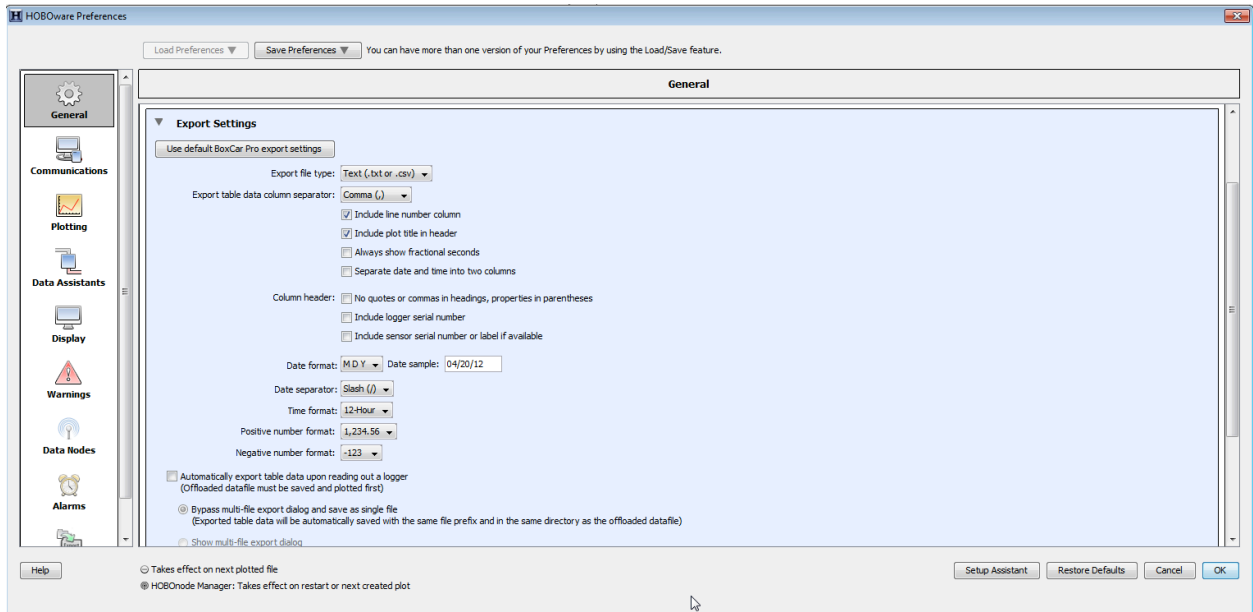
How do I export data from my HOBO Logger into a format that eClimateNotebook can read?

1. Connect Logger to computer via USB Port (or Serial Port if applicable)
2. Launch HOBOWare Pro
3. Configure the export settings to create eClimateNotebook-compatible CSV files
 - a. Click on File → Preferences



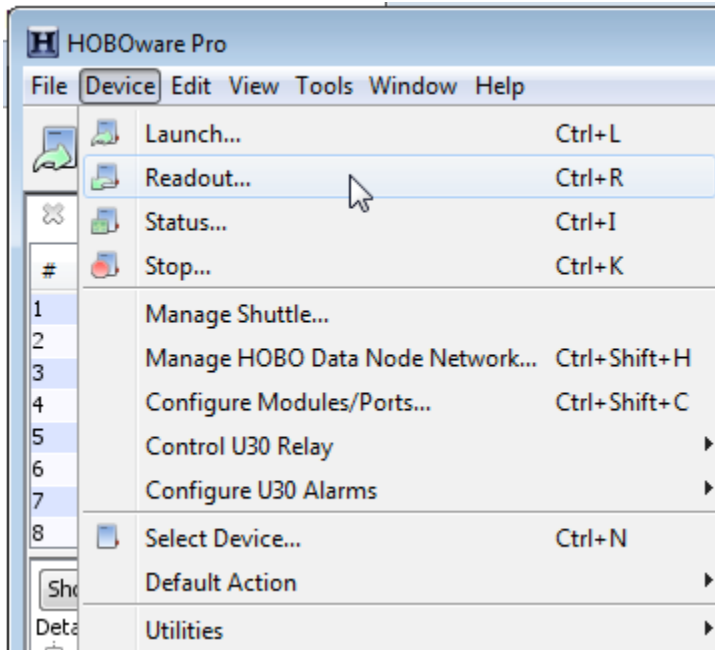
- b. Under the “General” section, click on the twisty (triangle) next to “Export Settings”
 - i. Export file type should read “Text (.txt or .csv)”
 - ii. Export table data column separator should read “Comma (,)”

- iii. Date format should read “M D Y”
- iv. Date separator should read “Slash (/)”
- v. Time format should read “12-Hour”
- vi. Click on “OK”

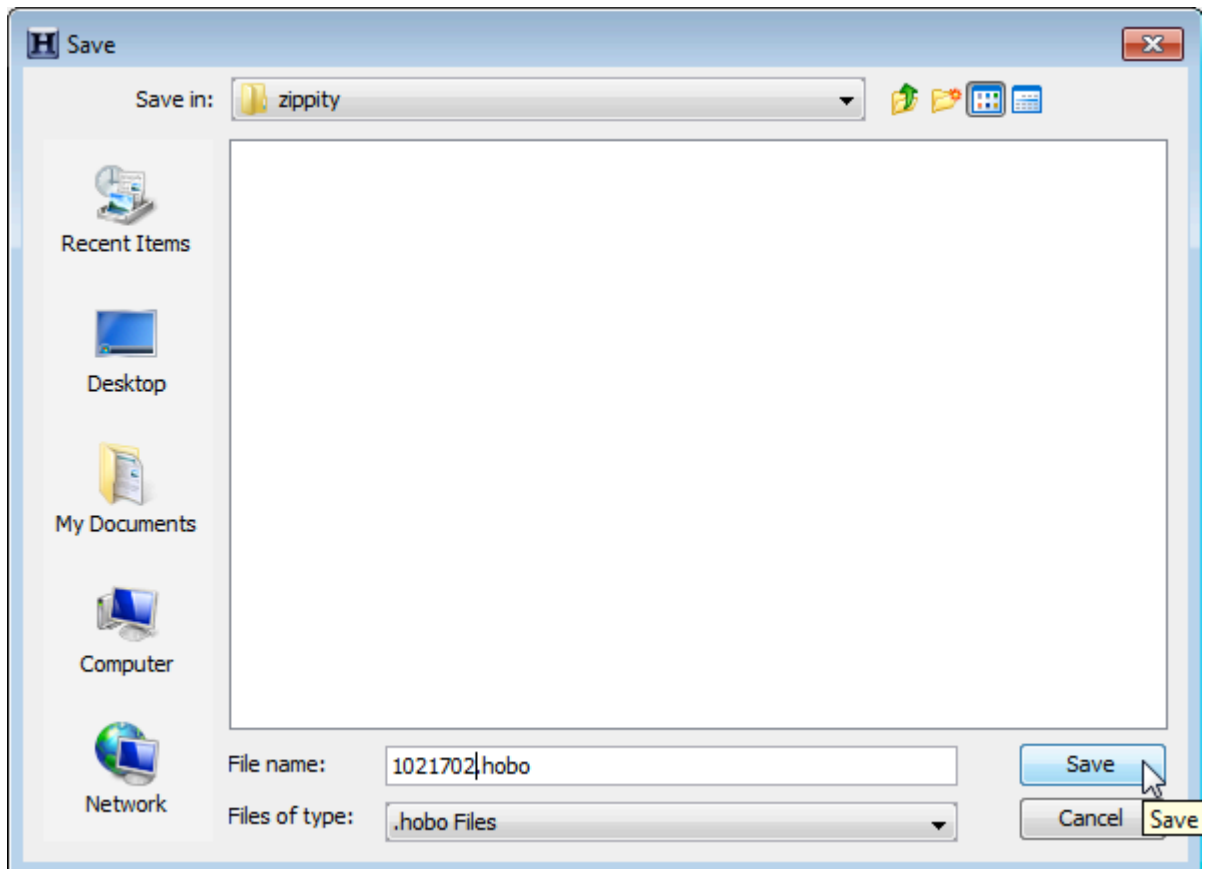


- c. If any of these settings are different, the easiest way to get back to the proper settings is to click on the “Restore Defaults” button

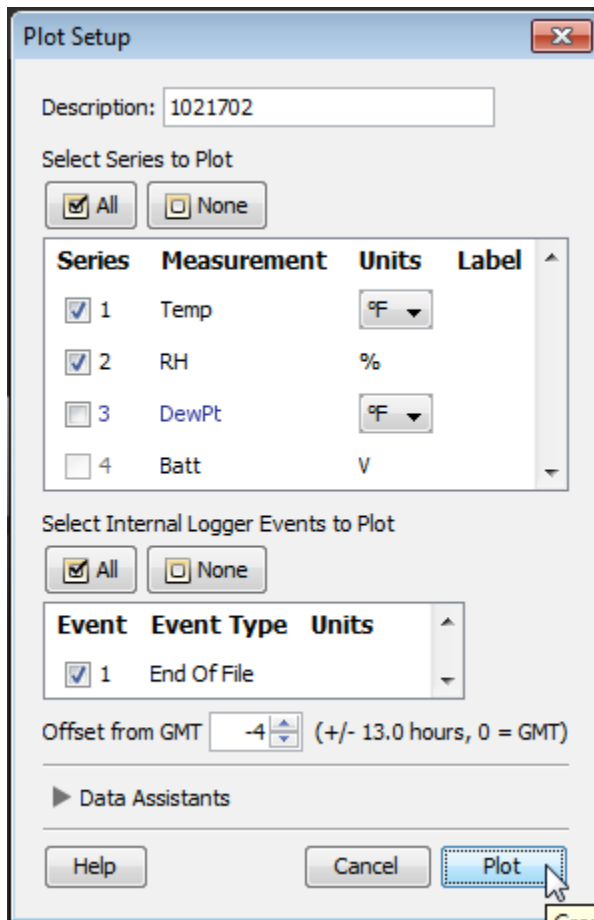
4. Device → Readout



5. Save the HOBO file



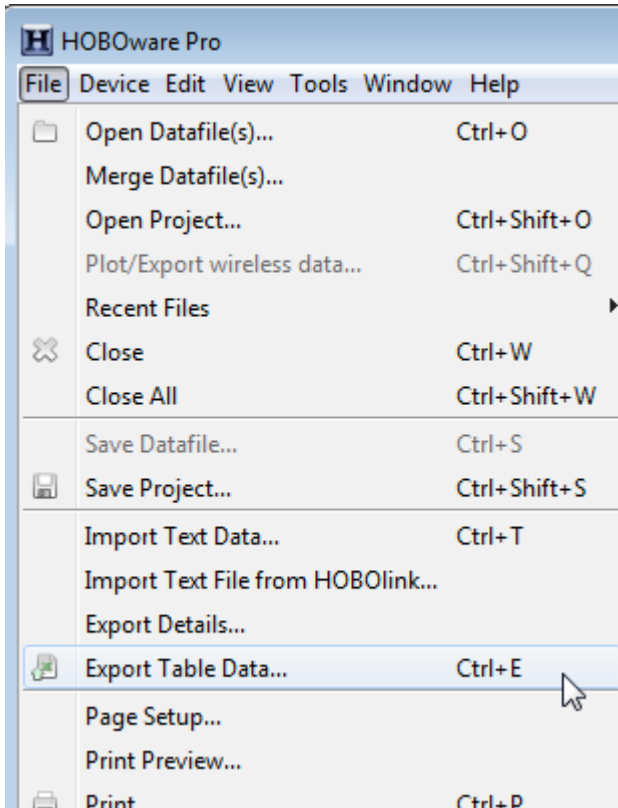
6. Plot Setup - defines the data to be used in the dataset, this will affect the export. Make certain only [1] Temp in ° F and [2] RH in % are checked, as well as [1] End Of File under Internal Logger Events



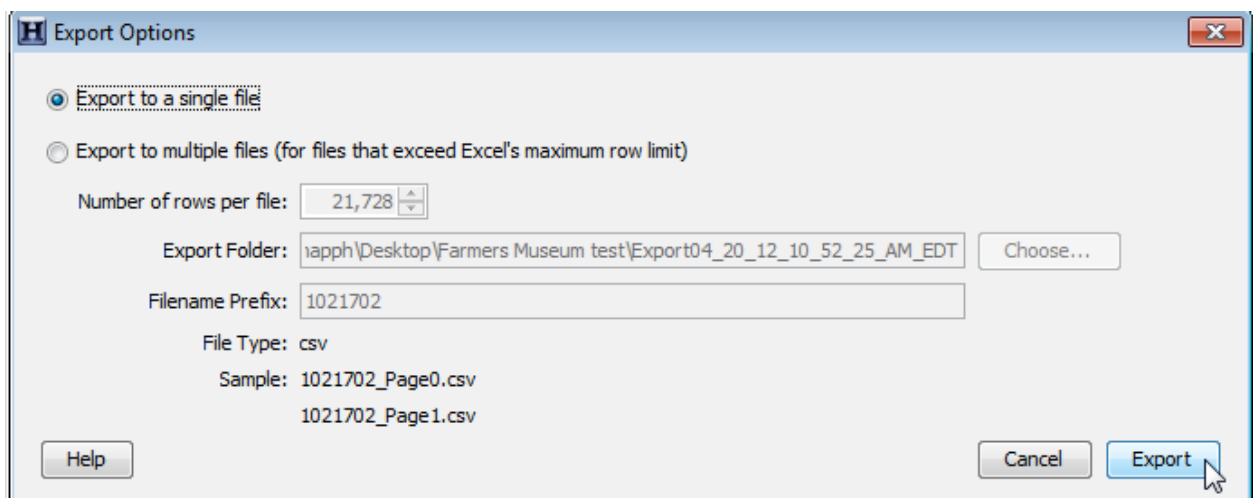
click on "Plot"

7. HOBOWare will display a graph of the collected data

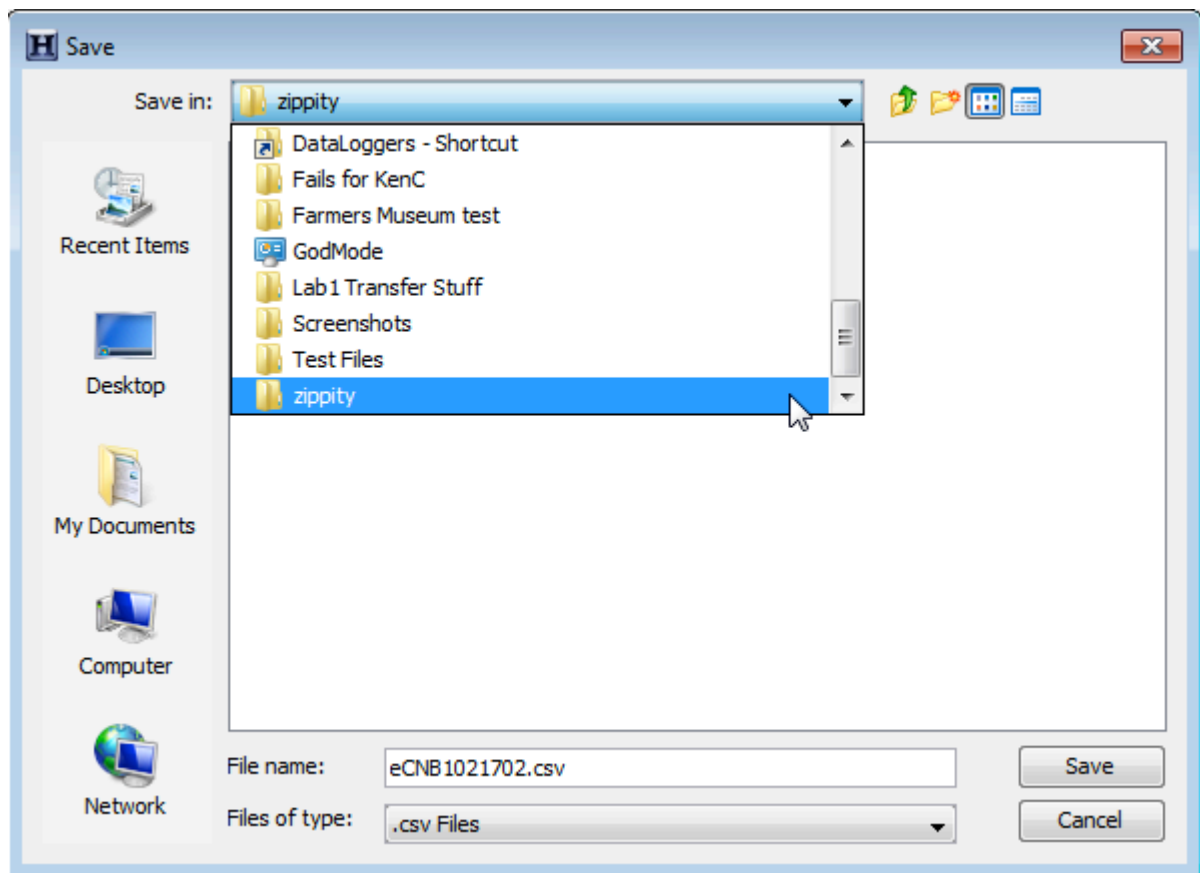
8. Click on File → Export Table Data...



9. Select “Export to a single file” then click on Export



10. Click on the dropdown next to “Save in:” to choose the file location to save the file in, confirm that next to “Files of type:” it says “.csv Files.” *If it doesn't, skip to step [] to change Preferences.* Click on Save



11. Your file is now ready to be imported into eClimate Notebook!